

6

Bibliography

- Atkinson, J. 1994. *Assessment of Remediation of Contaminated Sediments (ARCS) Program: Model Data Requirements and Mass Loading Estimates for the Buffalo River Mass Balance Study*. Prepared for the United States Environmental Protection Agency Great Lakes National Program Office. EPA 905-R94-005. May 1994.
- Barbour, M.T., J. Gerritsen, B.D. Snyder, and J.B. Stribling. 1999. *Rapid Bioassessment Protocols for Use in Streams and Wadeable Rivers: Periphyton, Benthic Macroinvertebrates and Fish, Second Edition*. EPA 841-B-99-002. U.S. Environmental Protection Agency (EPA); Office of Water; Washington, D.C.
- Buffalo Niagara Riverkeeper (BNR). 2005. *Draft Buffalo River Remedial Action Plan, 2005 Status Report*. Prepared by Buffalo Niagara Riverkeeper, Buffalo, New York. October 2005.
- _____. 2008. *Buffalo River Status Update Report*. Available online at <http://bnriverkeeper.org/programs/watershed-planning/buffalo-river-rap/>. Last accessed on May 11, 2010.
- _____. 2008. *Buffalo and Niagara River Habitat Assessment and Conservation Framework*. Prepared by M. Wooster and L. Matthies for BNR, Buffalo, NY.
- _____. 2008. *Draft Buffalo River Remedial Action Plan, 2008 Status Report*. Prepared by Buffalo Niagara Riverkeeper, Buffalo, New York.
- _____. 2009. *Buffalo River Habitat Opportunity Areas – 37 Sites*. (file-name: BR_Habitat Restoration Playbook_4-3-09.doc). From J. Jedlicka at jedlicka@bnriverkeeper.org.
- Buffalo Olmstead Park Conservancy. 2008. *The Olmsted City: The Buffalo Olmsted Park System: A Plan for the 21st Century*. January 2008. Available online at http://bfloparks.org/index.php/conservancy/master_plan. Last accessed on May 11, 2010.

- Buffalo River Great Lakes Legacy Act Project Coordination Team (Buffalo River GLLA PCT). 2010. Feasibility Study for the Buffalo River, New York, November 19, 2010. <http://www.dec.ny.gov/chemical/54166.html>
- City of Buffalo. 2002. City of Buffalo Comprehensive Plan available online at: http://www.ci.buffalo.ny.us/files/1_2_1/Mayor/COB_Comprehensive_Plan/index.html
- DePinto, J.V., M. Morgante, J. Zaraszczak, T. Bajak, and J.F. Atkinson. 1995. *Assessment of Remediation of Contaminated Sediments (ARCS) Program: Application of Mass Balance Modeling to Assess Remediation Options for the Buffalo River*. Prepared for the United States Environmental Protection Agency Great Lakes National Program Office. EPA 905-R-95-007. April 1995.
- Doran, S. 2010. Letter dated May 25, 2010, from Ms. Sandra Doran, Endangered Species Biologist, United States Fish and Wildlife Service, Cortland, New York, to Mr. Rob Noyes, Environmental Scientist, Ecology and Environment, Inc., Lancaster, New York.
- Ecology and Environment, Inc. (E & E). 2008. *Buffalo River Section 312 Environmental Dredging Existing Conditions Report*. Prepared for the Department of the Army, Buffalo District, Corps of Engineers, Buffalo, NY by E & E, Lancaster, NY.
- Einhouse, Don. 2010. Phone call between Don Einhouse (NYSDEC) and Justin Zoladz (Ecology & Environment, Inc.), Subject: Salmon River. May 2010
- Erie and Niagara Counties. 2006. Final Report Erie-Niagara Framework for Regional Growth. October 2006. Available online at <http://www.erie.gov/regionalframework/documents.asp>. Last accessed on May 11, 2010.
- Erie County Parks Master Plan. 2002. (http://www.erie.gov/environment/planning_ecdev/parks/index.asp)
- Erie County. 2002. 2020 Vision: Erie County Parks System Master Plan. 2002. Available online at http://www.erie.gov/environment/planning_ecdev/parks/index.asp. Last accessed on May 11, 2010.
- Federal Emergency Management Agency (FEMA). 2010. Flood Zones. U.S. Department of Homeland Security. <http://www.fema.gov/plan/prevent/floodplain/nfipkeywords/flood_zones.shtm#0> Accessed April 26, 2010.
- Guilfoyle, Michael P. and Richard A. Fischer 1. 2006. Guidelines for Establishing Monitoring Programs to Assess the Success of Riparian Restoration Efforts in Arid and Semi-arid Landscapes. August 2006.

- Herbert, Patrick J. 2010. Walleye (*Sander vitreus*) Stock Assessment (2006-2007) in the Buffalo River, NY, USA. A Thesis Presented to the Graduate Faculty of the Department of Biological Sciences, The College at Brockport, State University of New York in Partial Fulfillment of the Degree of Master of Science. March 2010
- International Joint Commission (IJC). 1991. Commission Approves List/Delist Criteria for Great lakes Areas of Concern. *Focus on International Joint Commission Activities*, Volume 16, Issue 1, ISSN 0832-6673.
- Irvine, K.N., R.J. Snyder, T.P. Diggins, B. Sinn, C.F. Chuey, J. Jedlicka, and J.B. O.Niell. 2005. *Assessment of Potential Aquatic Habitat Restoration Sites in the Buffalo River Area of Concern*. Prepared by Buffalo State, State University of New York, Buffalo, NY; Youngstown State University, Youngstown, OH; and Buffalo Niagara Riverkeeper, Buffalo, NY for New York State Department of Environmental Conservation (NYSDEC), Buffalo, NY.
- Markarewicz, Joseph. 2010. Phone call between Dr. Joseph Markarewicz (SUNY Brockport) and Justin Zoladz (Ecology & Environment, Inc.), Subject: Salmon River. May 2010.
- Model Stormwater Management Plan. October 2008.
<http://www.erie.gov/dsm/stormwater.asp>.
- Morris, S. and M. Hamilton. 2007. et al. *Avian Species Composition in Disturbed Riparian Environments: A Study of Three Waterways in Western New York*. Unpublished report. Buffalo: Canisius College and Buffalo Ornithological Society, 2007.
- New York State Department of Environmental Conservation (NYSDEC). 1989. Buffalo River Remedial Action Plan (RAP)
(<http://bnriverkeeper.org/programs/watershed-planning/buffalo-river-rap/>)
- _____. 1993. *Fish and wildlife habitat inventory and assessment of the lower Buffalo River watershed*. Great Lakes Section, Division of Water, Albany, NY.
- _____. 2003. *The 2002 Niagara River/ Lake Erie Basin Waterbody Inventory and Priority Waterbodies List*. Prepared by NYSDEC, Division of Water, Albany NY. Available online at
http://www.dec.ny.gov/docs/water_pdf/01pwl.pdf

- _____. 2003. *The 2002 Niagara River/ Lake Erie Basin Waterbody Inventory and Priority Waterbodies List*. Prepared by NYSDEC, Division of Water, Albany NY. Available online at http://www.dec.ny.gov/docs/water_pdf/01pwl.pdf
- _____. 2005. *The Niagara River-Lake Erie Drainage Basin: Sampling Years 2000-2001*. Rotating Integrated Basin Studies (RIBS) Water Quality Assessment Program. Prepare by NYSDEC, Division of Water, Albany NY.
- _____. 2008. Personal communication from Ken Roblee, NYSDEC, to Kris Erickson, Ecology and Environment, Inc.
- _____. 2009. Preliminary 2009 RIBS Data, from email correspondence with Margaret Novak, NYSDEC Statewide Waters Monitoring Section, Received via email 5/12/2009.
- _____. 2009. *The DRAFT New York State 2010 Section 303(d) List of Impaired Waters Requiring a TMDL/Other Strategies*. Prepared by NYSDEC, Division of Water, Albany NY. Available on line at http://www.dec.ny.gov/docs/water_pdf/303dfnlldrft2010.pdf. Last accessed April 26, 2010.
- _____. 2010. The Final New York State 2010 Section 303(d) list of Impaired Waters Requiring a TMDL/Other Strategy. June 2010. Available at: http://www.dec.ny.gov/docs/water_pdf/303dlistfinal10.pdf, website accessed on April 4, 2011.
- _____. 2010 Lake Erie Annual Report to the lake Erie Committee and the Great Lakes Fishery Commission. Albany, New York. March 2010
- _____. 2011. Unified Watershed Assessment and Watershed Protection and Restoration 1998. Available at: <http://www.dec.ny.gov/lands/34488.html#Unified>, website accessed on April 4, 2011.
- New York State Department of Health (NYSDOH). 2008. Chemicals in Sport-fish and Game 2008-2009 Health Advisories. Prepared by Division of Environmental Health Assessment. May 2008.
- New York State GIS Clearing House. 2011. Data Set Listing by Data Set Name. Available at: <http://www.nysgis.state.ny.us/gisdata/inventories/index.cfm>.
- Rafferty, S. and J. Grazio 2006. *Field Manual for Assessing Internal and External Anomalies in Brown Bullhead (Ameiurus nebulosus)*. Pennsylvania Sea Grant, Erie, Pennsylvania, and Pennsylvania Department of Environmental Protection, Erie, Pennsylvania.

- Salerno, T., 2010, Letter dated April 26, 2010, from Ms. Tara Salerno, Information Services, New York Natural Heritage Program, Albany, New York, to Mr. Rob Noyes, Environmental Scientist, Ecology and Environment, Inc., Lancaster, New York.
- Society for Ecological Restoration International Science & Policy Working Group. 2004. The SER International Primer on Ecological Restoration (Version 2: October, 2004).
- Town of Cheektowaga Comprehensive Plan. n.d. Preliminary Draft, publication date unavailable (<http://www.wd-gis.com/CheektowagaCompPlan/Default.aspx>)
- Town of Cheektowaga. n.d.. Town of Cheektowaga Comprehensive Plan: Preliminary Draft. Available online at <http://www.wd-gis.com/CheektowagaCompPlan/Default.aspx>. Last Accessed on May 11, 2010.
- Town of Lancaster. n.d. Stormwater Management Plan (SWMP), (http://www.erie.gov/lancaster/pdfs/stormwater_management.pdf)
- Town of Lancaster. 2000. The Lancaster-Depew Regional Comprehensive Plan, A Comprehensive Plan... A Common Future. February 2000. Available at Town of Lancaster Town Clerk's Office 21 Central Avenue, Lancaster, NY 14086.
- Town of Orchard Park. 2007. Town of Orchard Park Comprehensive Plan. Adopted September 19, 2007. Available online at http://orchardparkny.org/town/townboard/2009_Comprehensive_Plan_web_edition.pdf. Last accessed on May 11, 2010.
- Town of West Seneca Comprehensive Plan, November 2005, amm. October 2006. (<http://westseneca.net/comprehensive.html>)
- Town of West Seneca. 1999. Town of West Seneca Municipal Open Space and Greenway Protection. 1999. Available online at: <http://www.westseneca.net/pdf/greenway.pdf>. Last Accessed August 30, 2010.
- Town of West Seneca. 2006. Town of West Seneca Comprehensive Plan. November 2005, Amended October 2006. Available online at: <http://www.westseneca.net/comprehensive.html>. Last accessed May 11, 2010.

- Towns of Aurora, Elma, Holland and Wales and Village of East Aurora. 2003. Regional Comprehensive Plan and Draft Generic Environmental Impact Statement. May 19 2003. Available online at <http://www.east-aurora.ny.us/plan.htm>. Last accessed on May 11, 2010.
- U.S. Census. 2000. American Factfinder Decennial Census 2000. Tables P53 (Summary File 3), H85 (Summary File 3), and GCT-PH1. Available online at http://factfinder.census.gov/servlet/DatasetMainPageServlet?_program=D EC&_submenuId=&_lang=en&_ts=. Last Accessed May 12, 2010.
- _____. 2010. American Factfinder. Available at: <http://2010.census.gov/2010census/data/>.
- United States Department of Agriculture, Natural Resources Conservation Service (USDA NRCS). 2003. Soil Survey Geographic (SSURGO) Database. Available online at: <http://soils.usda.gov/survey/geography/ssurgo/>
- United States Environmental Protection Agency (EPA). 2009. Buffalo River Area of Concern. Webpage last updated August 2009. Available online at <http://www.epa.gov/grtlakes/aoc/buffalo.html> Last accessed on March 31, 2011.
- _____. 2010. *A Compendium of Delisting Targets and Beneficial Use Impairments in the United States Great Lakes Areas of Concern*.
- United States Army Corps of Engineers, Buffalo District (USACE). 2008. Buffalo River Section 312 Environmental Dredging Existing Conditions Report, November 2008.
- _____. 2010. *Buffalo Color Area, Beneficial Use of Dredged Material, Buffalo River, Section 204*. USACE, Buffalo District, Buffalo, NY.
- _____. 2010. *Riverbend, Beneficial Use of Dredged Material, Buffalo River, Section 204*. USACE, Buffalo District, Buffalo, NY.
- United States Department of Agriculture, Natural Resource Conservation Service (USDA NRCS). 1986. Soil Survey of Erie County, New York.
- _____. 1998. Stream Corridor Restoration: Principles, Processes, and Practices. http://www.nrcs.usda.gov/technical/stream_restoration/
- United State Fish and Wildlife Service (USFWS) Northeast. 2011. Federally Listed Endangered and Threatened Species and Candidate Species in New York (By County). Available at: <http://www.fws.gov/northeast/nyfo/es/CoListCurrent.pdf>. Updated on January 28, 2011.



Wilkinson, Mike. 2010. Phone call between Mike Wilkinson (NYSDEC) and Justin Zoladz (Ecology and Environment, Inc.), Subject: Salmon River. May 2010.

A

Glossary of Terms

Aggradation. A process of filling and raising a stream bed, with upbuilding approximately at grade.

Area of Concern (AOC). They are defined by the U.S.-Canada Great Lakes Water Quality Agreement (Annex 2 of the 1987 Protocol) as “geographic areas that fail to meet the general or specific objectives of the agreement where such failure has caused or is likely to cause impairment of beneficial use of the area's ability to support aquatic life.”

Aquatic. Living or growing in or on water.

Assemblage. A group of species found together in a particular area.

Bedload. The material that is moved within a river bed by pushing, rolling, and siltation. Bedload is most often composed of sands and pebbles, but can include gravel and boulders when the water levels are high and currents are strong.

Beneficial Use Impairment (BUI). A potential use or trait of an area that is compromised by current ecological conditions.

Benthic. Pertaining to the bottom of a water body.

Benthos. Community of organisms living at the bottom of a water body.

Brownfield(s). Abandoned or underused industrial and commercial facilities and lands that are available for re-use. Environmental contamination is usually a common characteristic of a brownfield site.

Community. A group of organisms that occupy a particular area. In general, community structure and composition is driven by environmental conditions. Thus, over particular soils, on particular slopes and in particular regions, one expects to find similar assemblages of plants and animals.

Delisting. Removal of the AOC designation for a location after it has been sufficiently restored. Delisting requires removing the BUI targets.

Ecological function. A measurable property of an ecosystem that characterizes that system. Examples include rates primary productivity and nutrient cycling.

Ecological restoration. An intentional activity that initiates or accelerates the recovery of an ecosystem with respect to its health, integrity, and sustainability.

Ecosystem. An assemblage of plant and animal communities, and the physical environment in which they live, linked by a variety of processes that allow for the transfer of energy and materials between and among the component communities.

Geotextiles. A permeable synthetic material comprised of textiles, such as monofilament or multifilament. Geotextiles are used with geotechnical engineering-related material as an integral part of human-made structures.

Great Lakes Legacy Act. This act, adopted in 2002, provides funding to take the necessary steps to clean up contaminated sediment in “Areas of Concern located wholly or partially in the United States,” including specific funding designated for public outreach and research components.

Great Lakes National Program Office (GLNPO). A federal EPA office created in 1978 to oversee the U.S. fulfillment of its obligations under the Great Lakes Water Quality Agreement with Canada.

Habitat. The area or environment in which an organism or community of organisms lives. There are many components to habitat, for most animals these include feeding, breeding, nesting or rearing, and escape habitat.

Hydraulic cover stones. Large single stones placed within a river or creek. These cover stones allow fish to hide from predators and rest during high-flow events. They are useful within channels that offer little vegetative cover, undercut banks, or in-channel structure.

Ice out. The thawing of ice along the surface of a waterbody, such as in ponds, lakes, rivers, and creeks.

Invasive species. Plants and animals that are not native to an area, and that since they generally have no natural predators or consumers in the area to which they were introduced, may thrive to the point that they crowd out native species.

Live siltation. This revegetation technique includes the installation of brushy vegetation at the edge of a waterbody and is utilized to anchor the toe of a slope, create fish habitat and localize sediment. This technique can be incorporated to provide immediate cover and fish habitat while other vegetative planting are allowed to grow.

Live staking. Involves the planting of a live individual woody cutting directly into the ground. This technique provides a quick and inexpensive way to stabilizing a bank.

Locked logs. Involves the grouping of trees, which are anchored within or under structures in rivers or creeks. These devices are used to encourage a stream to recover a more natural meander pattern (the natural bending of the stream) and to provide in-stream structure and cover for fish and other aquatic animals.

Longitudinal toe protection. A revetment that is placed along an existing streambed, instead of on the top bank. This technique provides toe protection and does not afford any protection to mid and upper stream bank regions.

Macrophytes. Plant life (especially those occurring within waterbodies) that are observable with the naked eye.

Native species planting. A method utilized to stabilize stream banks and riparian corridors while using plants found within the region of restoration activities.

Pinned logs. Another term for locked logs.

Pool. A slow moving stretch of a creek or river, which is often marked by deeper waters.

Primeval vegetation. In the context of the ERMP this refers to original natural vegetation of an area before the influences of European settlers.

Revetments, log or stone. Revetments are rows of stones or interconnected logs, which are anchored to a stream bank. This allows for reduced flow velocities, resting and hiding areas for fish and opportunities for sediment trapping.

Riffle. A fast moving stretch of a creek or river where dissolved oxygen may enter the waterbody. These areas are usually shallower than those harboring pools.

Riparian area. The land area extending from the banks of a river or stream landward, within which activities have direct impacts on stream ecosystem function.

Rootwads. A composite of interlocking tree roots and other parts that is used to stabilize stream banks as well as provide habitat for fish and aquatic wildlife.

Run. A relatively smooth-flowing section of a creek or river.

Seiche. A tidal-like rise and fall of water in large lakes, which occurs after water is piled up on one side of the lake by wind or high barometric pressure; when this force diminishes, the water rocks back and forth from one shore to the other with decreasing amplitude.

Slag. Rock like deposits that are by-products of steel production. Slags are mildly alkaline rocks that are often used as construction materials, particularly for road sub-grades.

SPDES. State Pollution Discharge Elimination System

Succession. Generally predictable and orderly changes in composition and structure of an ecological community.

Terrestrial. Living or growing on land.

Thalweg. The deepest part of a river or creek channel along a given cross section.

Toe slope. A gently inclined surface occurring at the base of a steep hill slope, which is comprised of deposited materials.

Vegetated riprap. A permanent filter fabric or granular underlining that is erosion-resistant and used to cover large, loose, and/or angular stone.

Watershed. An area of land from which water drains to a river, pond, or lake.

B

Site Datasheet

Buffalo River ERMP Site Investigation Data Sheet

Project/Site: Applicant/owner: Investigator(s):	Date: City/County: State:
Investigation/Sampling Area: (GIS ID) Land Use/LC Description: Land Use/LC on Adjacent Areas: (include infrastructure and ROW)	Weather:

Near-shore Substrate

Substrate type: <input type="checkbox"/> bedrock <input type="checkbox"/> clay <input type="checkbox"/> boulder <input type="checkbox"/> silt <input type="checkbox"/> cobble <input type="checkbox"/> other <input type="checkbox"/> gravel <input type="checkbox"/> sand	Comments: Photo:
---	-----------------------------

Near-shore Aquatic Habitats

Sediment bar present <input type="checkbox"/> yes <input type="checkbox"/> no <input type="checkbox"/> run <input type="checkbox"/> riffle <input type="checkbox"/> pool <input type="checkbox"/> deep water <input type="checkbox"/> shallow water	SAV present <input type="checkbox"/> yes <input type="checkbox"/> no Species:
Comments/Sketch: Photo:	

<p>Bank Stability: Erosion Present <input type="checkbox"/> yes <input type="checkbox"/> no <input type="checkbox"/> minor <input type="checkbox"/> moderate <input type="checkbox"/> severe Comments:</p>	<p>Erosion Type: <input type="checkbox"/> undercutting <input type="checkbox"/> slumping <input type="checkbox"/> scour <input type="checkbox"/> other</p> <p>Overhanging vegetation present <input type="checkbox"/> yes <input type="checkbox"/> no Exposed root mats present <input type="checkbox"/> yes <input type="checkbox"/> no</p> <p>Photo:</p>
--	--

<p>Bank Height: _____ ft</p> <p>Comments/sketch:</p>	<p>Riparian Width: Riparian Area Present: <input type="checkbox"/> yes <input type="checkbox"/> no _____ ft</p> <p>Comments/sketch:</p>
--	--

<p>Site hydrology: On-shore hydrology feature present <input type="checkbox"/> yes <input type="checkbox"/> no</p> <p>Photo:</p>	<p>Type: <input type="checkbox"/> surface drainage <input type="checkbox"/> run <input type="checkbox"/> tributary <input type="checkbox"/> seep <input type="checkbox"/> backwater channel <input type="checkbox"/> disconnected oxbow <input type="checkbox"/> drain tile outlet <input type="checkbox"/> pools</p>
<p>Comments/Sketch:</p>	

Vegetation

Strata- T=tree; S=shrub; H=herb; V=vine					
Riparian plant species (mean water line to top of bank)	Stratum	Approximate area	Absolute % cover	Dominant Y/N	Invasive spe- cies Y/N
Comments including descriptions of all strata:					

Remaining site plant species (from top of bank inland)	Stratum	Approximate area	Absolute % cover	Dominant Y/N	Invasive spe- cies Y/N
Comments including descriptions of all strata:					

Does wetland habitat exist in the upland area yes no

Is the area all upland yes no

Comments (%upland - %wetland habitat):

Extent of invasive species – sketch and comments:

Photo:

Potential Historical/Cultural Resources of Significance

Are Historical/Cultural Resources of Significance present? yes no
(per literature or direct observation)

Type:

Comments/sketch:

Photo:

Natural Features

Natural features exist? yes no

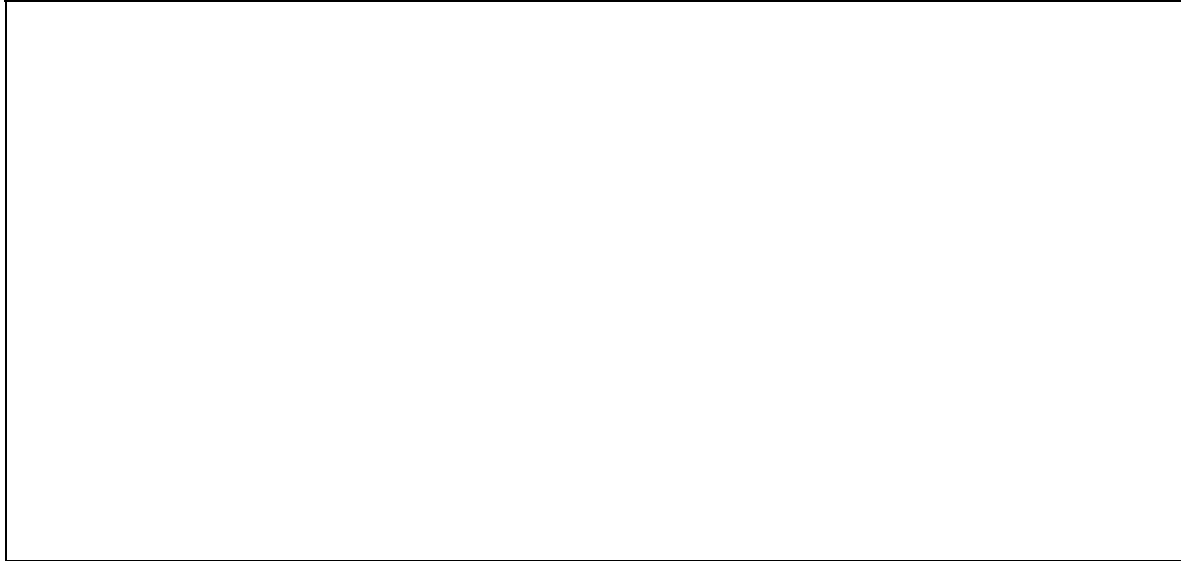
Type:

- disconnected oxbow
- remnant wetland
- floodplain areas
- fringe/coastal marsh
- remnant vegetation communities
- other

Comments:

Photo:

Preliminary Assessment of Restoration Opportunities



Other:

1. Any identifiable protected areas are adjacent or nearby? Identify protected area, note distance and direction from candidate site

2. List each habitat type that could be restored/enhanced/expanded/created.

3. List habitat types in “surrounding area”.

4. Utility or other easements and infrastructure present that pose(s) constraint to restoration? Identify, locate on map and sketch above



List of Stakeholders

Buffalo Audubon Society
Buffalo Greene Energy Corridor
Buffalo Maritime Center
Buffalo Niagara Partnership
Buffalo Niagara Riverkeeper
Buffalo State College - Geography and Planning
Buffalo Urban Development Corp.
City of Buffalo, Environmental Management Commission
City of Buffalo, Office of Strategic Planning
Ellicott Development Company
Erie County Department of Environment and Planning
Erie County Soil and Water Conservation District
Greater South Buffalo Chamber of Commerce
Haudenosaunee Environmental Task Force
New York Sea Grant Program
Norfolk Southern Railroad
NYS Attorney General Environmental Protection Bureau
NYS Department of Environmental Conservation - Region 9
Old First Ward Community Association
Project Area Landowners including Better Wire Products, Bidco Marine Group,
Norfolk Southern Railroad, PVS Chemical Solutions, Inc., and residential and
commercial landowners
State University of New York at Buffalo
Town of Lancaster
Town of West Seneca
Town of West Seneca Environmental Commission
Tuscarora Nation, Tuscarora Environmental Program
U.S. Army Corps of Engineers, Buffalo District
USDA Natural Resources Conservation Service

**Table C-1
Buffalo River ERMP Stakeholder Meetings Attendance**

NYSDEC Stakeholder Meeting - June 4, 2010

Name	Affiliation
Marty Doster	NYSDEC
Dan King	NYSDEC
Russ Biss	NYSDEC
Tim DePriest	NYSDEC
Ken Roblee	NYSDEC
Mike Wilkinson	NYSDEC
Don Zelazny	NYSDEC
Gerry Palumbo	NYSDEC
Kris Erickson	Project Staff - Ecology and Environment, Inc.
Andy Francisco	Project Staff - Ecology and Environment, Inc.
Deepali McCloe	Project Staff - Ecology and Environment, Inc.

Stakeholder Meeting - June 24, 2010

Name	Affiliation
Andrew Hannes	USACE, Buffalo District
Bryan Hinterberger	USACE, Buffalo District
Jim Carr	Erie County Department of Environment and Planning
Charles Meyer, Jr.	Buffalo Maritime Center
Chad Staniszewski	NYSDEC
David Stebbins	Buffalo Urban Development Corporation
Dennis Sutton	City of Buffalo
Evelyn Hicks	Town of West Seneca Conservation Commission
Jerry Palumbo	NYSDEC
Tom Hersey	Erie County Department of Environment and Planning
Helen Donske	New York Sea Grant Program
Kim Irvine	Buffalo State College
Isabel Hannes	University at Buffalo
Jill Jedlicka	Buffalo Niagara RiverKeeper
Jennifer Sepulveda	City of Buffalo
James O'Heir	n/a
John Whitney	USDA Natural Resources Conservation Service
Katherine Winkler	Buffalo Niagara RiverKeeper
Lora Smith	Buffalo Audubon
Linda Logan	Haudenosaunee Environmental Task Force
Mark Gaston	Erie County Soil and Water Conservation District

C List of Stakeholders

Mary Rossi	Erie County
Mardell Sundown	Haudenosaunee Environmental Task Force
Margaret Wooster	Buffalo Niagara RiverKeeper
Raymond Vaughan	NYS Attorney General's Office
Richard Rutkowski	Erie County
Rene Rickard	Tuscarora Environment
Craig Thrasher	Buffalo Scholastic Rowing Association
Deepali McCloe	Project Staff - Ecology and Environment, Inc.
Danielle Green	Project Staff - USEPA - GLNPO
Kris Erickson	Project Staff - Ecology and Environment, Inc.

Town Governments Stakeholder Meeting - August 4, 2010

Name	Affiliation
Bob Harris	Town of Lancaster
Gary Bommer (West Seneca)	Town of West Seneca
Bill Pugh (Cheektowaga)	Town of Cheektowaga
Kris Erickson	Project Staff - Ecology and Environment, Inc.
Andy Francisco	Project Staff - Ecology and Environment, Inc.
Deepali McCloe	Project Staff - Ecology and Environment, Inc.

Tonawanda Band of Senecas, Tuscarora Nation - September 9, 2010

Name	Affiliation
Linda Logan	Tonawanda Band of Senecas, Haudenosaunee Environmental Task Force
Mardell Sundown	Tonawanda Band of Senecas, Haudenosaunee Environmental Task Force
Neil Patterson	Tuscarora Nation, Tuscarora Environment
Rene Rickard	Tuscarora Nation, Tuscarora Environment
Paul Fuhrmann	Project Staff - Ecology and Environment, Inc.
Larisa Romanowski	Project Staff - Ecology and Environment, Inc.
Kris Erickson	Project Staff - Ecology and Environment, Inc.
David Weeks	Project Staff - Ecology and Environment, Inc.

Erie County Department of Environment and Planning Stakeholder Meeting - October 18, 2010

Name	Affiliation
Dan Barry	Erie County DEP
John Opalka	Erie County DEP
Joanna Panasiewicz	Erie County DEP
Tom Hersey	Erie County DEP
Mark Rountree	Erie County DEP
Ellary Mori	Erie County DEP

Kathy Konst	Erie County DEP
Paul Krantz	Erie County DEP
Paul D'Orlando	Erie County DEP
Chris Pawenski	Erie County DEP
Ken Swanekamp	Erie County DEP
Mike Alspaugh	Erie County DEP
Dale Morris	Erie County DEP
David Weeks	Project Staff - Ecology and Environment, Inc.
Deepali McCloe	Project Staff - Ecology and Environment, Inc.

Stakeholder Meeting - May 9, 2011

Name	Affiliation
Evelyn Hicks	Town of West Seneca Conservation Commission
Tom Hersey	Erie County Department of Environment and Planning
Jill Jedlicka	Buffalo Niagara RiverKeeper
John Whitney	USDA Natural Resources Conservation Service
Greg Stevens	Riverwright & Buffalo Green Energy
Kim Colaiacoro	Harris Beach PLLC
Ronald Hill	Underberg and Kessler LLP
Kerrie Gallo	Buffalo Niagara RiverKeeper
William Breeser	Buffalo Scholastic Rowing Association
Margaret Wooster	Buffalo Niagara RiverKeeper
Patti Fischer	Tuscarora Environment
Deepali McCloe	Project Staff - Ecology and Environment, Inc.
Danielle Green	Project Staff - USEPA - GLNPO
Kris Erickson	Project Staff - Ecology and Environment, Inc.
David Weeks	Project Staff - Ecology and Environment, Inc.
Tegan Gifford	Project Staff - Ecology and Environment, Inc.

D

Candidate Restoration Sites

Table D-1 All Candidate Restoration Sites

Site #	Name	Ownership	Acres	Notes
Sites Selected for Conceptual Project Development				
1	Old Bailey Woods	City of Buffalo	4.560	
2	Bailey Woods Adjacent Parcels	Multiple Private Owners	3.321	
3	Bailey Avenue Peninsula	County of Erie	4.116	
4	Seneca Bluffs	County of Erie	11.370	
5	Concrete Central Peninsula	City of Buffalo; Con-Rail; CSX	45.148	
6	Blue Tower Turning Basin	Open Water	7.791	
7	Ogden Estates	One Private Owner	27.482	
8	North Bank Riparian Buffer	City Buffalo	6.107	
9	West Seneca Behind Compost Facility	Town of West Seneca and Private Owners	27.114	
10	West Seneca Oxbow	Town of West Seneca	256.368	
11	Katherine Street Peninsula Shoreline Adjacent to Smith St Park	City of Buffalo	4.384	
12	NYSDEC Fishing Access at Harlem Road	State of New York	2.414	
13	Cazenovia Park	City of Buffalo	191.014	
14	Town West Seneca Comprehensive Plan 2006, East of Burchfield	Town of West Seneca	74.172	
15	Thruway to Railway	Multiple Private and Public Owners	n/a	
16	Railway to Ridge Rd.	Multiple Private and Public Owners	n/a	
17	West Seneca Development Center	Multiple Private and Public Owners	n/a	
18	Erie County Sewer District Cayuga Creek Overflow	County of Erie	54.652	
19	Stiglmeier Park	Town of Cheektowaga	291.776	
20	LA-7 Wetland Cheektowaga	Multiple Private Owners	31.676	
21	Smith Street Park	County of Erie	28.209	
22	Town of West Seneca Special Focus Area 1	Private/Utilities	58.239	
23	Town of West Seneca Special Focus Area 2	Private/Utilities	45.803	
24	Private Land Not Developed	Multiple Private Owners	38.601	
25	Borden Road at Clinton Street	County of Erie	23.645	
26	Bippert Farms	One Private Owner	20.901	
Sites Not Selected for Conceptual Project Development				
27	Como Lake Park	County of Erie	509.462	
28	Foot of Katherine Street	City of Buffalo	4.687	GLLA Habitat Restoration & Enhancement
29	Buffalo Sewer Authority Pumping Station	City of Buffalo	5.677	

Table D-1 All Candidate Restoration Sites

Site #	Name	Ownership	Acres	Notes
30	Erie Canal Harbor Site	City of Buffalo	7.148	
31	Former USCG Station Property	USA (South Pier Light)	31.885	
32	Ohio Street Canal	One Private Owner	0.607	
33	Ohio Street Park	City of Buffalo	20.226	GLLA Habitat Restoration & Enhancement
34	Great Lakes Paper Fibres	Great Lakes Paper Fibres	2.257	
35	Bison City Rod and Gun Club	Bison City Rod and Gun Club	1.877	
36	Riverbend (aka Steelfields)	Buffalo Economic Renaissance Corp.	114.404	GLLA Habitat Restoration & Enhancement
37	Head of City Ship Canal	Port Crescent Land; Con-Rail; Buffalo Creek RR	14.983	GLLA Habitat Restoration & Enhancement
38	Buffalo Color Area D	Buffalo Color Corp	18.918	GLLA Habitat Restoration & Enhancement, DEC remedial site
39	Toe of Kelly Island	General Mills Properties	2.368	GLLA Habitat Restoration & Enhancement
40	Riverfest Park	Buffalo River Fest Park LLC	2.656	DEC remedial site
41	Foot of Hamburg Street	Killian-Black Trucking	0.235	
42	NFTA Property Adjacent to Buffalo Color Area D	Niagara Frontier Transportation Authority	12.527	
43	Steelfields Turning Basin	Open Water	4.764	
44	Buffalo Color Plant Site	Buffalo Color Corp	24.673	DEC remedial site
45	Southside Elementary School Shoreline	City of Buffalo	0.954	
46	Tiftt Bordering Wetlands, BU-1 A	City of Buffalo	43.496	Outside focus area
47	Ohio Street Elbow	Erie County Industrial Development Authority	0.737	
48	Instream Habitat	Open Water	0.753	
49	Houghton Park	City of Buffalo	61.673	
50	Ridge Road to Union Road	Multiple Private and Public Owners	n/a	
51	Union Road to High View	Multiple Private and Public Owners	n/a	
52	Lydecker Road to Transit Road	Multiple Private and Public Owners	n/a	
53	Reinstein Woods State Unique Area	State of New York	275.523	Outside focus area
54	BU-7 Wetland Tiftt Street	City of Buffalo/Other	26.515	Outside focus area
55	BU-15 Wetland Tiftt Street	City of Buffalo/Other	75.349	Outside focus area
56	Tiftt Nature Preserve	City of Buffalo	233.310	Outside focus area
57	LaSalle Park	City of Buffalo	89.119	Outside focus area
58	Riverbend Commerce Park I	Erie County Industrial Development Authority	19.660	Outside focus area

D Candidate Restoration Sites
Table D-1 All Candidate Restoration Sites

Site #	Name	Ownership	Acres	Notes
59	Riverbend Commerce Park II	Ship Certain LLC	25.109	Outside focus area
60	Lehigh Valley Property	Consolidated Rail Corp	18.928	Outside focus area
61	Buffalo Creek Railyard Surrounding Blue Water Tower	Lehigh Valley RR	43.984	
62	PVS Chemicals, Inc	PVS Chemicals Inc	14.896	
63	Exxon Mobile	Buckeye Terminals LLC; One Babcock Terminal Inc	36.954	DEC remedial site
64	Union Ship Canal	Holcim (US) Inc. ; Gateway Trade Center Inc	8.891	Outside focus area
65	Bell Slip	Niagara Frontier Transportation Authority	106.262	DEC remedial site
66	NFTA Slip	Niagara Frontier Transportation Authority	29.180	Outside focus area
67	Times Beach	City of Buffalo	56.512	Outside focus area
68	Breakwall	Open Water	11.034	Outside focus area
69	Reference Area B	Unknown	8.492	Outside focus area
70	Republic Steel LTV	Steelfields Ltd	6.552	Outside focus area
71	Hardened Banks of Cazenovia Creek	Open Water	4.305	
72	Ebenezer Brook	Multiple Private Owners	n/a	Outside focus area
73	Gorge	Multiple Private Owners	144.435	

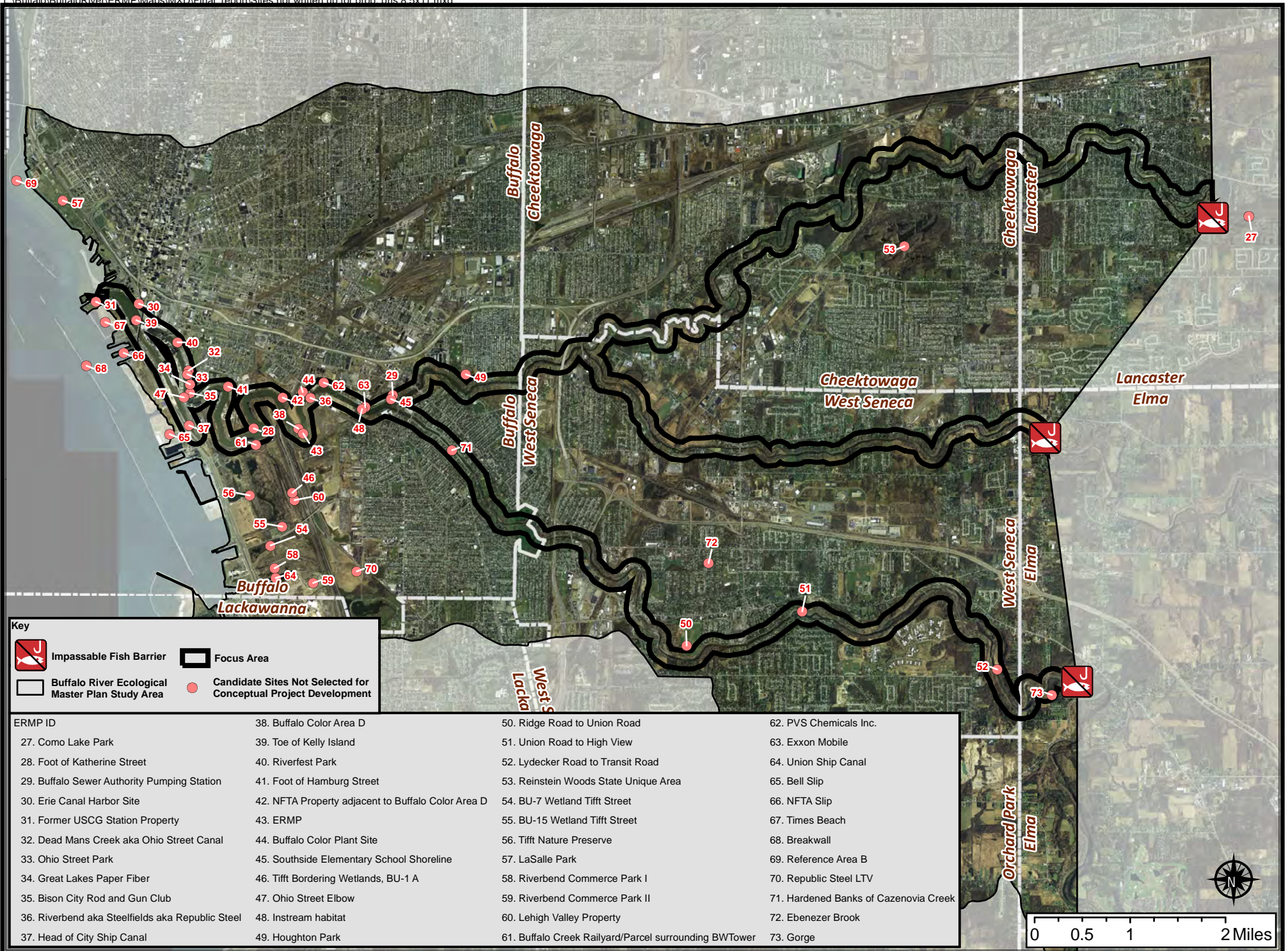


Figure D-1 Buffalo River Ecological Restoration Master Plan - Candidate Sites Not Selected for Conceptual Project Development