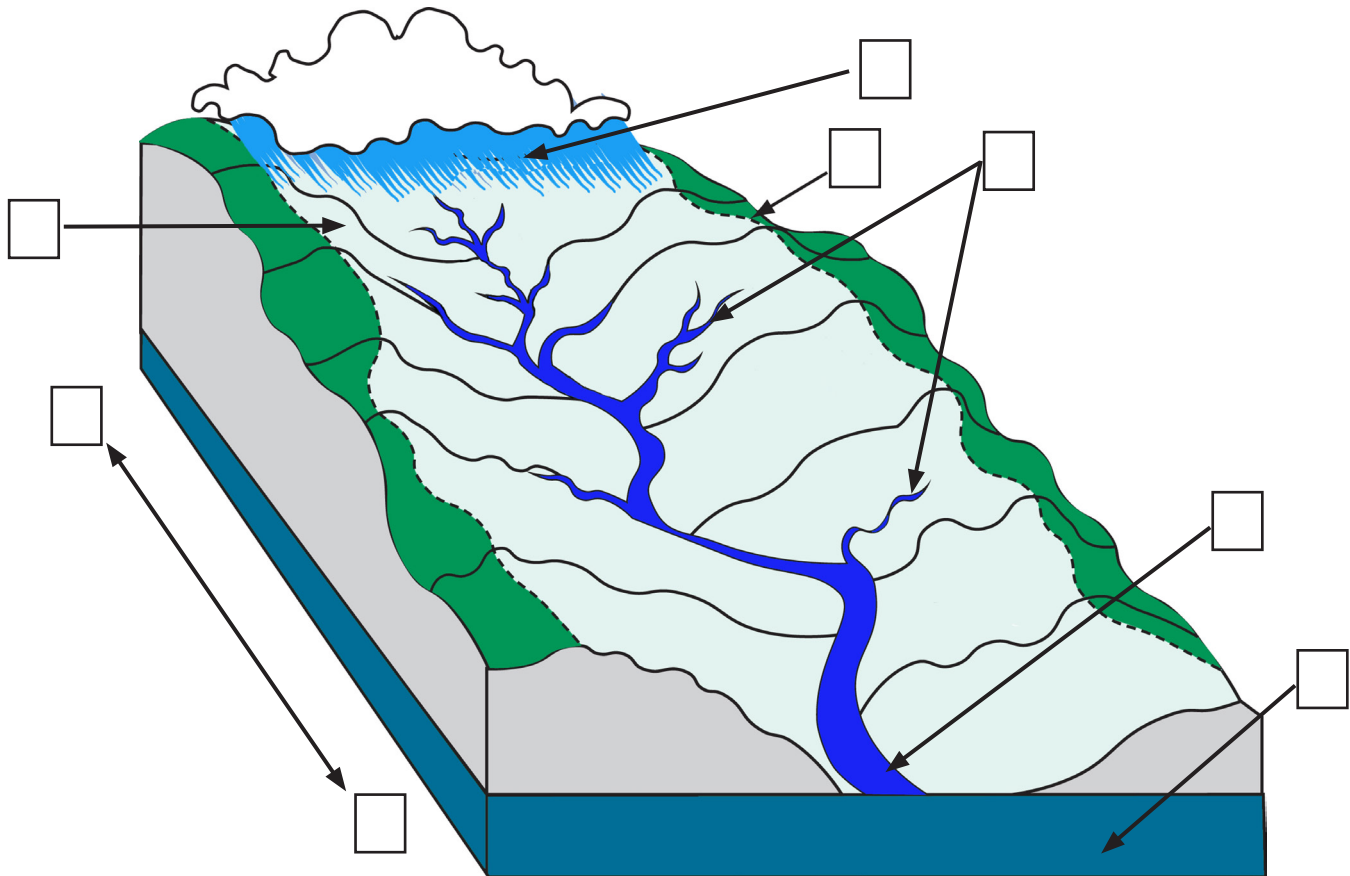


What is a Watershed?

When precipitation, like rain or snow, falls on land it can soak into the soil, evaporate into the atmosphere, be absorbed by plants, or run across the surface of the land and enter waterways. These waterways are part of a larger system - a **watershed**. The word watershed describes an area of land that drains water to a common area, like a lake, river, or ocean. Watersheds can be large or small and their shape is determined by the topography and geology of the land.
Everyone lives in a watershed!



Use the words in the box to complete the sentences. Mark the picture with the correct number.

tributaries upstream groundwater precipitation mouth boundary downstream headwaters

- Ridges and hills that separate two watersheds are called the watershed _____.
- _____ are upstream areas where a river starts as a small stream.
- A river or stream flows into a larger body of water at the _____.
- The smaller streams or rivers that join larger streams or rivers are called _____.
- A fish swimming opposite the direction of flowing water is swimming _____.
- Rain, sleet, snow and hail are all types of _____.
- _____ is the water that soaks into cracks and spaces and is stored beneath the earth's surface.
- Water flowing _____ is flowing away from the river's source and toward the mouth.